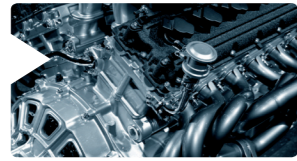


Industries



Aeronautics



Automotive



Plastics



Energy



Micromechanics



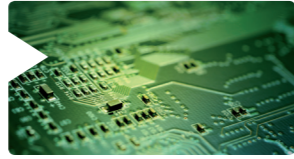
Glass



Medicine



Packaging



Semiconductor



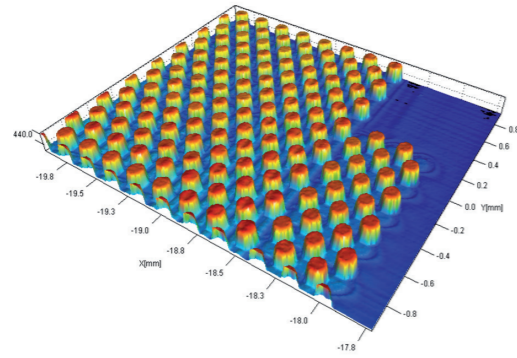
Optics

AND MANY OTHERS...

CHRcodile CLS

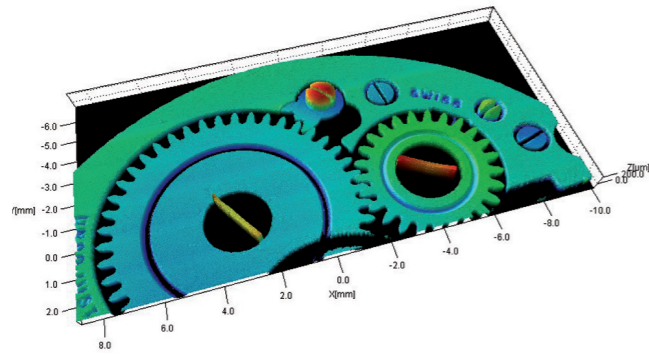
APPLICATIONS (SCAN AREA)	EXAMPLE	TIME SCANNING / NUMBER OF POINTS
--------------------------	---------	----------------------------------

Height and shape inspection on bumped wafer (1.91 mm x 2.2 mm)



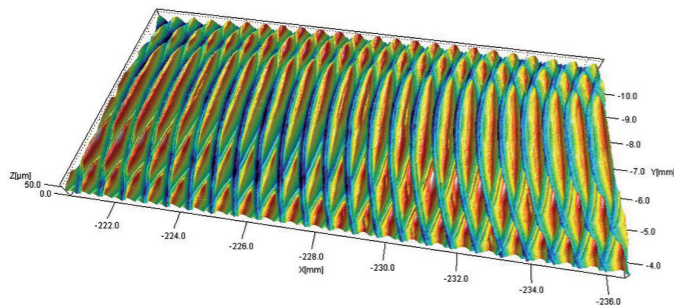
0.11 s
42,240 points in 1 pass

Flatness measurement on watch movement (22.2 mm x 10.5 mm)

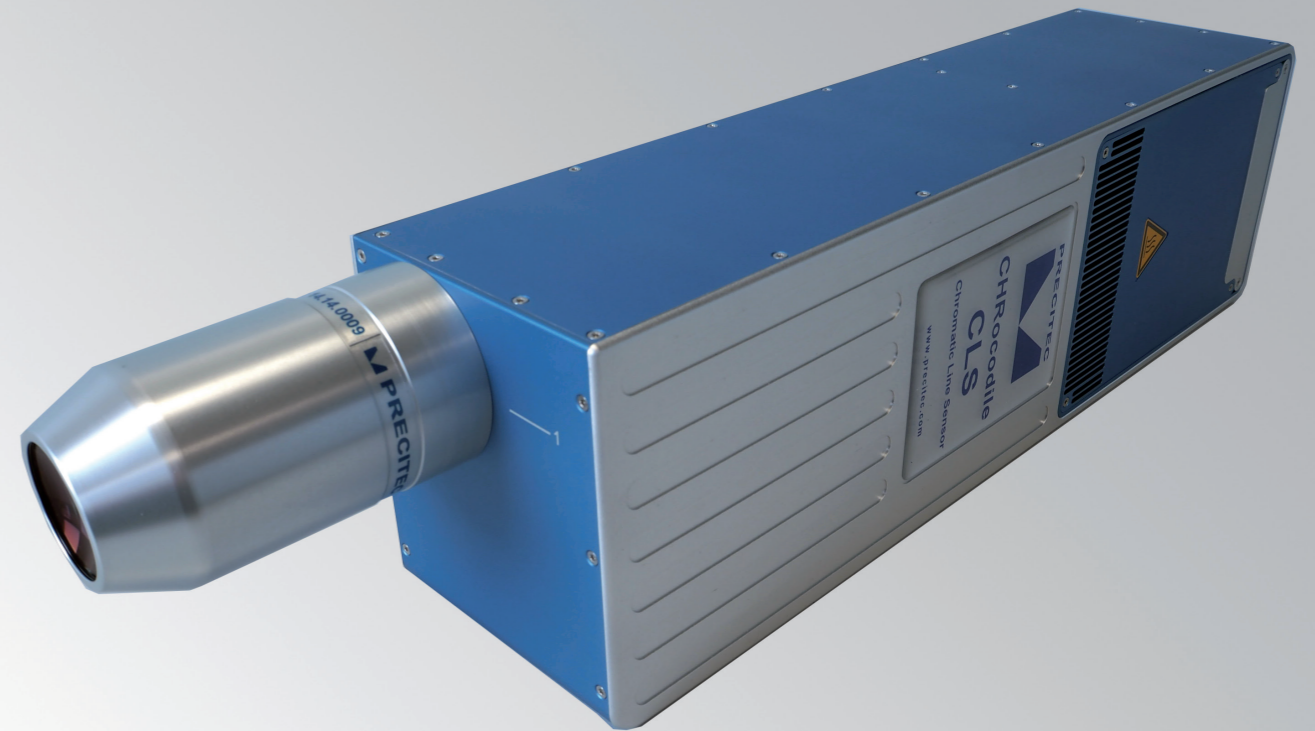


4.7 s
1,793,546 points in 5 passes

Roughness measurement on metal (15.9 mm x 7.4 mm)



3.17 s
1,118,472 points in 5 passes



CONTACTLESS PRECISION MEASUREMENT	CONTACTLESS PRECISION MEASUREMENT	CONTACTLESS PRECISION MEASUREMENT
PRECISE FAST CONTACTLESS MEASUREMENT	PRECISE FAST CONTACTLESS MEASUREMENT	PRECISE FAST CONTACTLESS MEASUREMENT
THICKNESS	DISTANCE	TOPOGRAPHY

Chromatic Line Sensor

CHRcodile CLS, the PRECITEC chromatic confocal line sensor offers an incredibly fast 3D measurement of 384,000 points per second with nanometric scale resolution. Thanks to its robust and highly integrated design, CHRcodile CLS is perfectly suited for easy integration into inspection machines in the production line, including harsh industrial environments. An outstanding dynamic range and an excellent signal to noise ratio make the CHRcodile CLS the best measuring tool for all materials – including polished and highly tilted surfaces. With its unrivaled performance/price ratio, CHRcodile CLS is the best choice for ultrafast 3D inspection.

EFFICIENT

- High-speed
- Non-contact
- Precise

USER FRIENDLY

- Maintenance-free
- Easy to integrate
- Robust

VERSATILE

- Instantaneous profile measurement
- Inline inspection
- Interchangeable optical probes
- Distance and Thickness

HIGH-SPEED
2,000 profiles/s,
sampling 384,000 points/s



SENSOR	CHRcodile CLS
application	distance, thickness
lines / second	100 - 2000, optionally 6000 ¹⁾
number of points / line	192
measuring range	depends on optical probe
synchronization with external devices	trigger input, synchronizing output, 5 encoder inputs
interface	Ethernet, service ports: RS-422, USB
transfer rate	100 Mbit (Ethernet), 9600 - 921600 Baud (RS-422), 921600 Baud (USB: virtual comport)
light source	LED
operating temperature	+5°C up to +50°C
storage temperature	-20°C up to +70°C
dimension without probe (w x h x d)	391 mm x 100 mm x 114 mm
weight	4 kg
supply voltage	24 +/- 10% V DC (with separate power supply 100 - 240 V AC / 50 Hz - 60 Hz)
rated power	40 W
protection class	IP 50 (DIN 40050/ IEC 144)
note	SDK available .NET Framework 4 and higher compatible
order number	5007994 (straight); 5007995 (90° angled); 5008859 (upgrade up to 6000 lines/second)

¹⁾ with reduction of measuring range

The given data was generated for a typical application and may be different given other circumstances. Furthermore misprints, changes and/or innovations may lead to differences in the listed measurements, technical data and features. Therefore all information is non-binding and technical data, measurements as well as features are not guaranteed by information in this product information. Mar 2016

Optical Probe

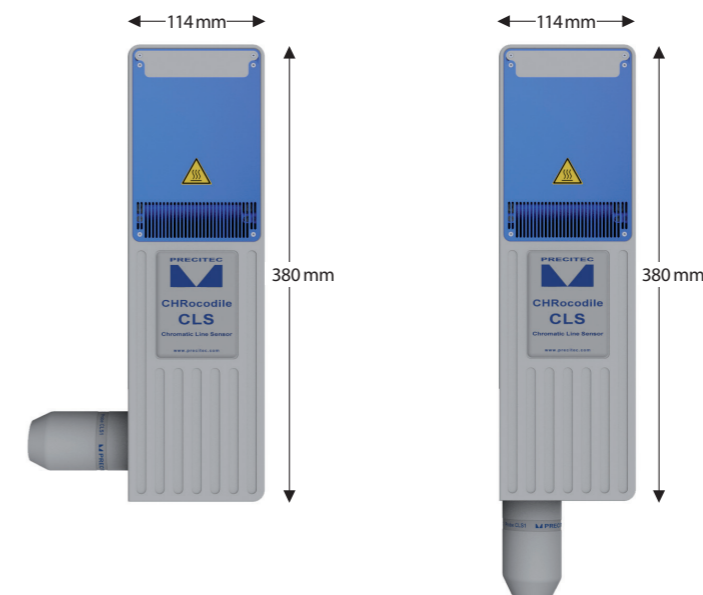


OPTICAL PROBE	CLS 0.2	CLS 1	CLS 2.3	CLS 4
Measuring range	200 µm	950 µm	2300 µm	3900 µm
Line length	0.96 mm ± 0.01 mm	1.91 mm ± 0.02 mm	1.53 mm ± 0.02 mm	4.78 mm ± 0.04 mm
Pitch	5 µm ± 0.05 µm	10 µm ± 0.1 µm	8 µm ± 0.08 µm	25 µm ± 0.25 µm
Working distance ¹⁾	5.3 mm ± 0.4 mm	18.5 mm ± 0.5 mm	15.6 mm ± 0.5 mm	36.4 mm ± 0.6 mm
Spot diameter	2 µm	4 µm	3.2 µm	10 µm
Lateral resolution	1 µm	2 µm	1.6 µm	5 µm
Axial resolution	20 nm	80 nm	200 nm	320 nm
Accuracy ²⁾	± 80 nm	± 300 nm	± 780 nm	± 1.2 µm
Numerical aperture	0.7	0.55	0.55	0.33
Measurement angle to surface ³⁾	90°+/-44°	90°+/-33°	90°+/-33°	90°+/-20°
Thickness measuring range ⁴⁾	20 µm - 280 µm	75 µm - 1.35 mm	200 µm - 3.1 mm	300 µm - 5.5 mm
Dimension Length Diameter	70.4 mm 37 mm	93.3 mm 54 mm	99 mm 54 mm	120 mm 58 mm
Weight	190 g	430 g	390 g	510 g
Order number	5007993	5007895	5009128	5007896

¹⁾ Bottom of optical probe to middle of measuring range | ²⁾ Measurement on perpendicular mirror at 20° C | ³⁾ Decreasing accuracy on the limits | ⁴⁾ Refractive index n = 1.5

Dimensional drawings

Available configurations (90° angled / straight)



External interface

